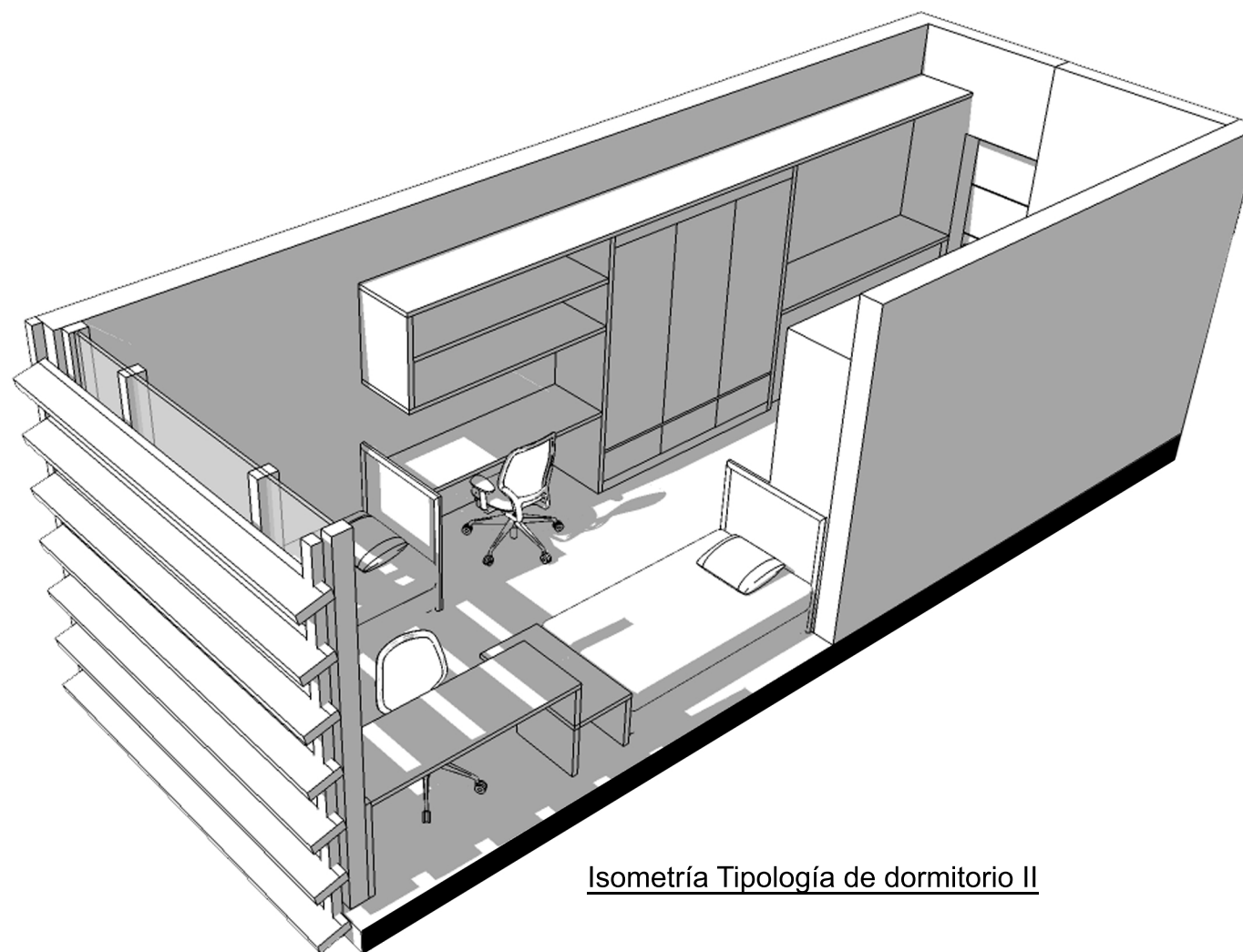


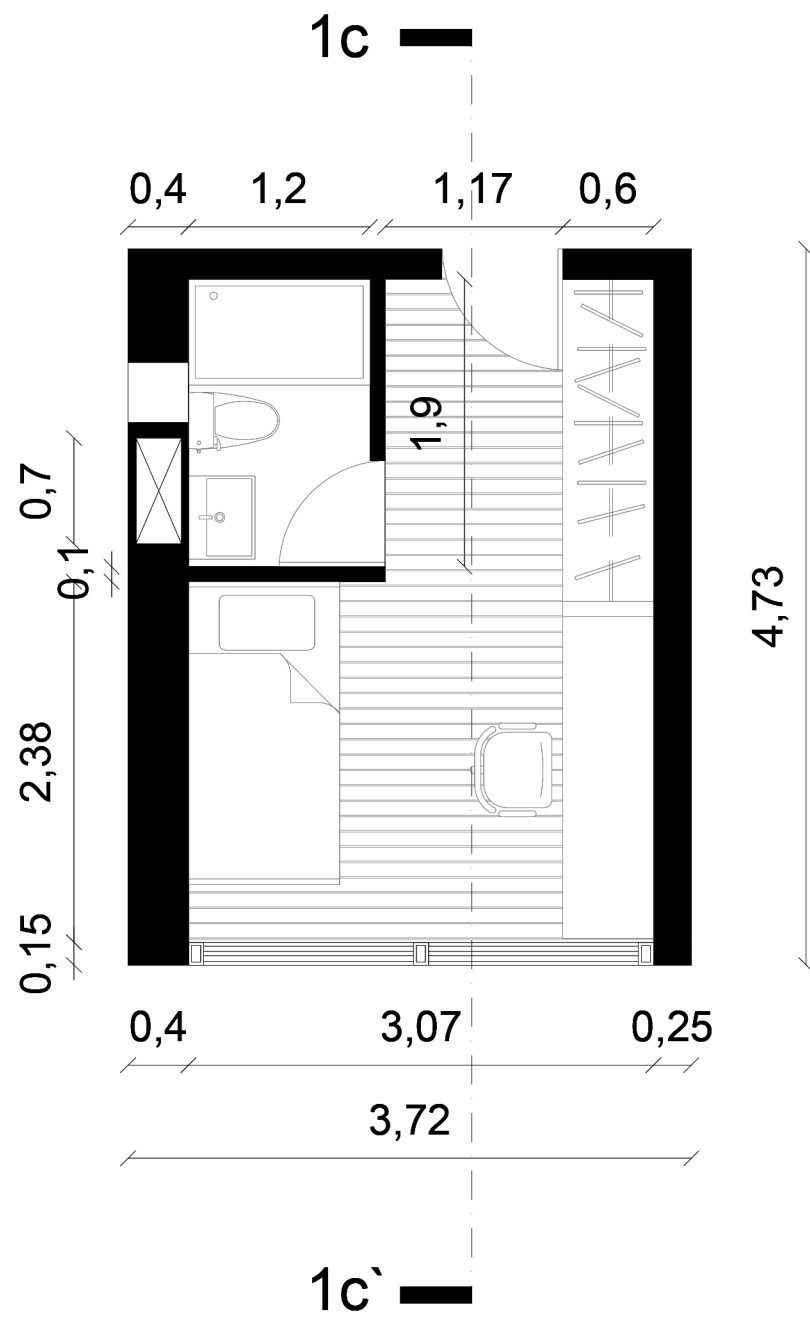
Tipología de dormitorio doble n. II



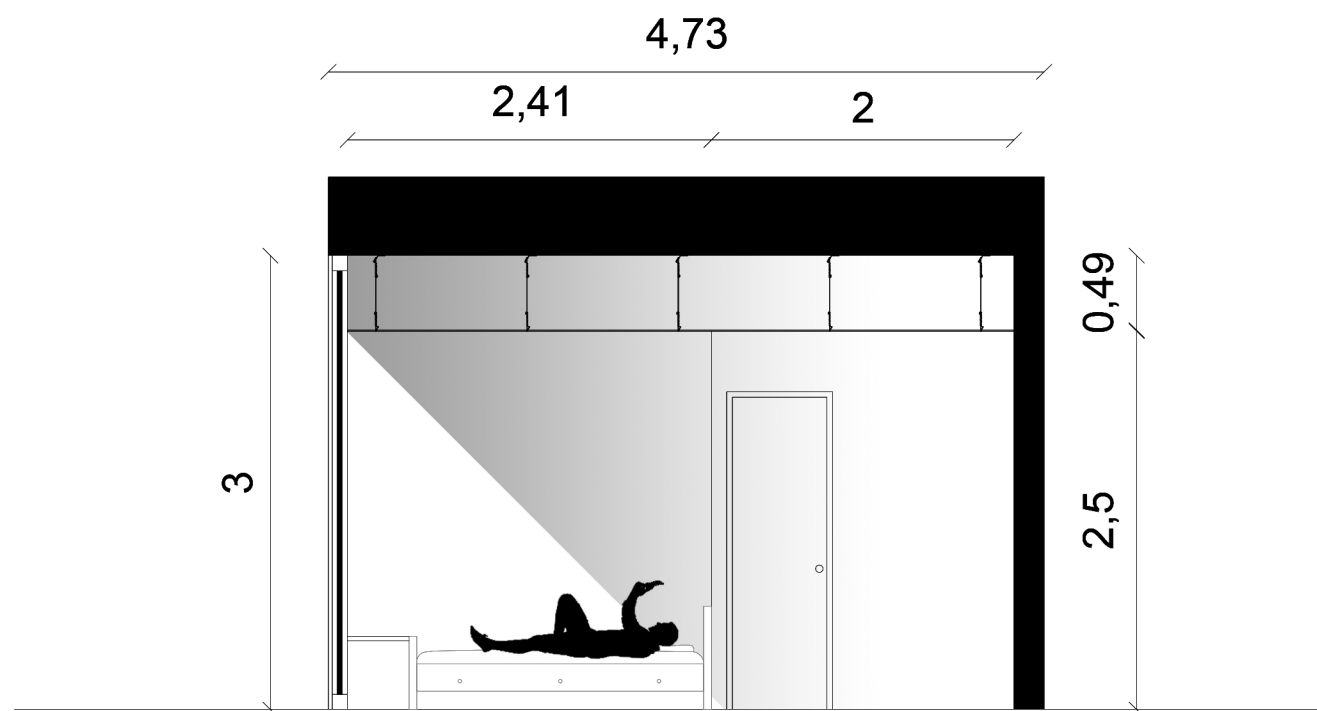
Sección 1b - 1b'



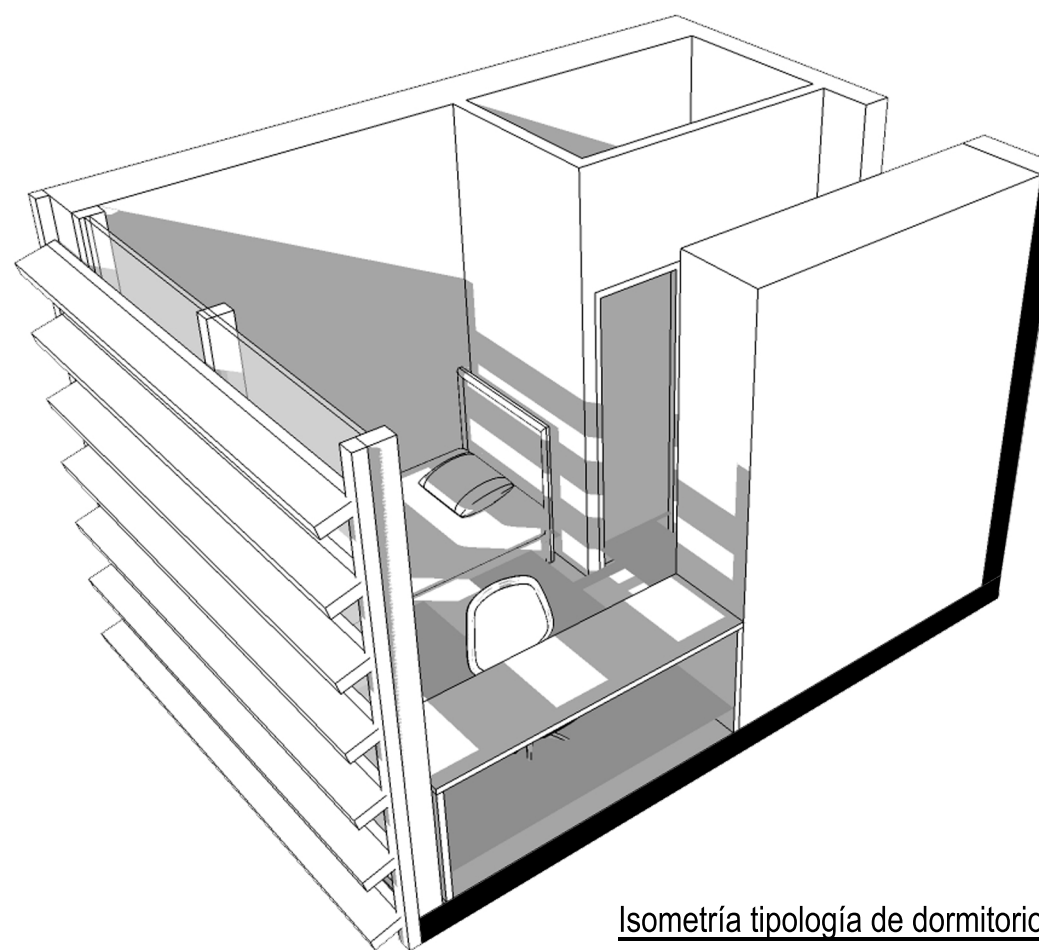
Isometría Tipología de dormitorio II



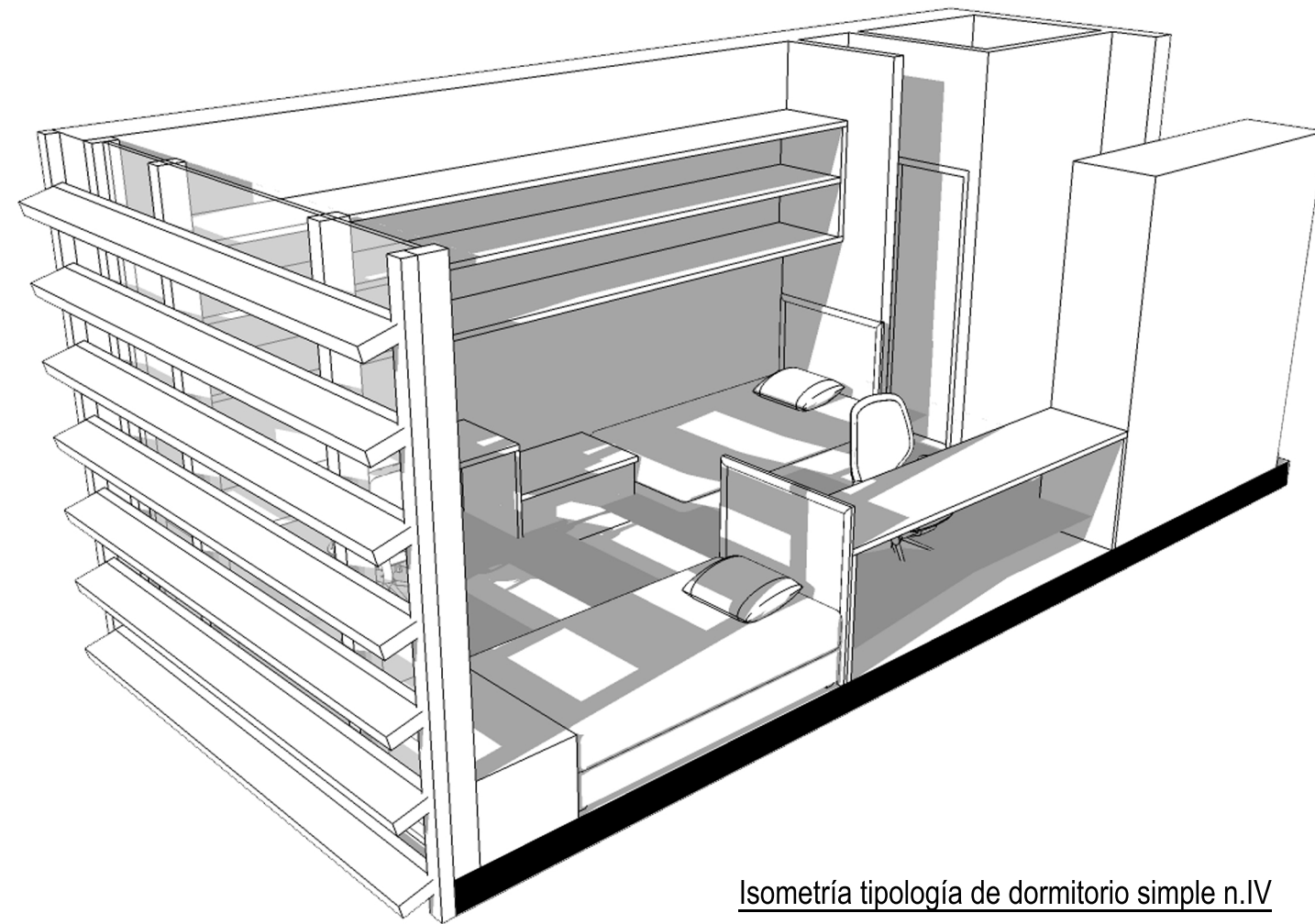
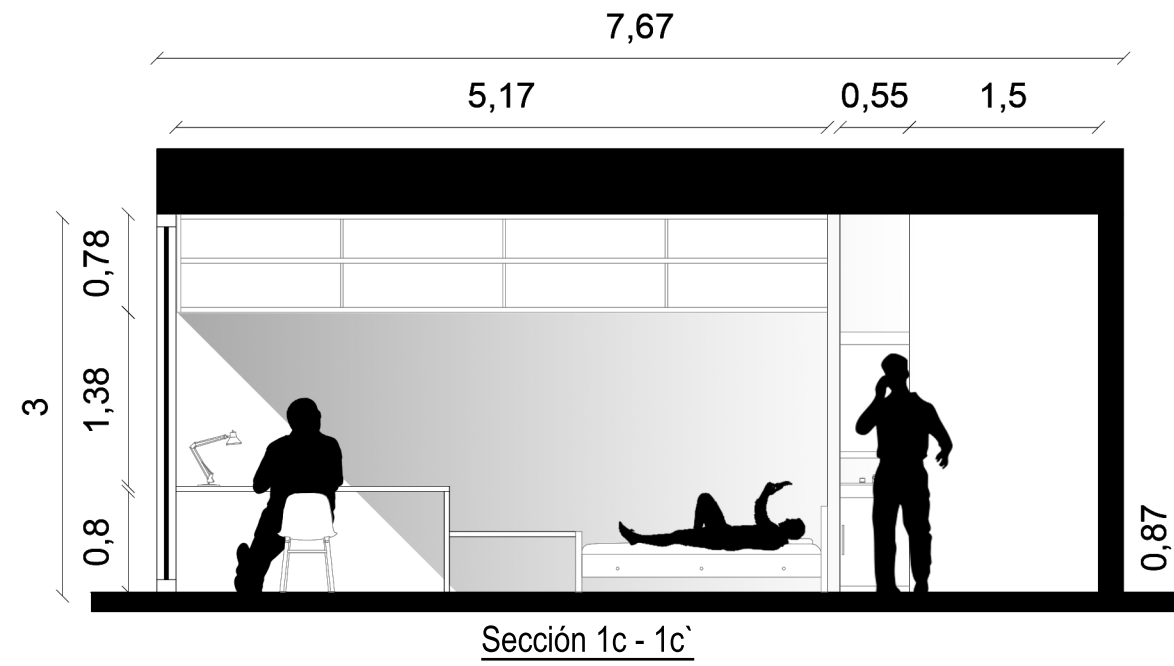
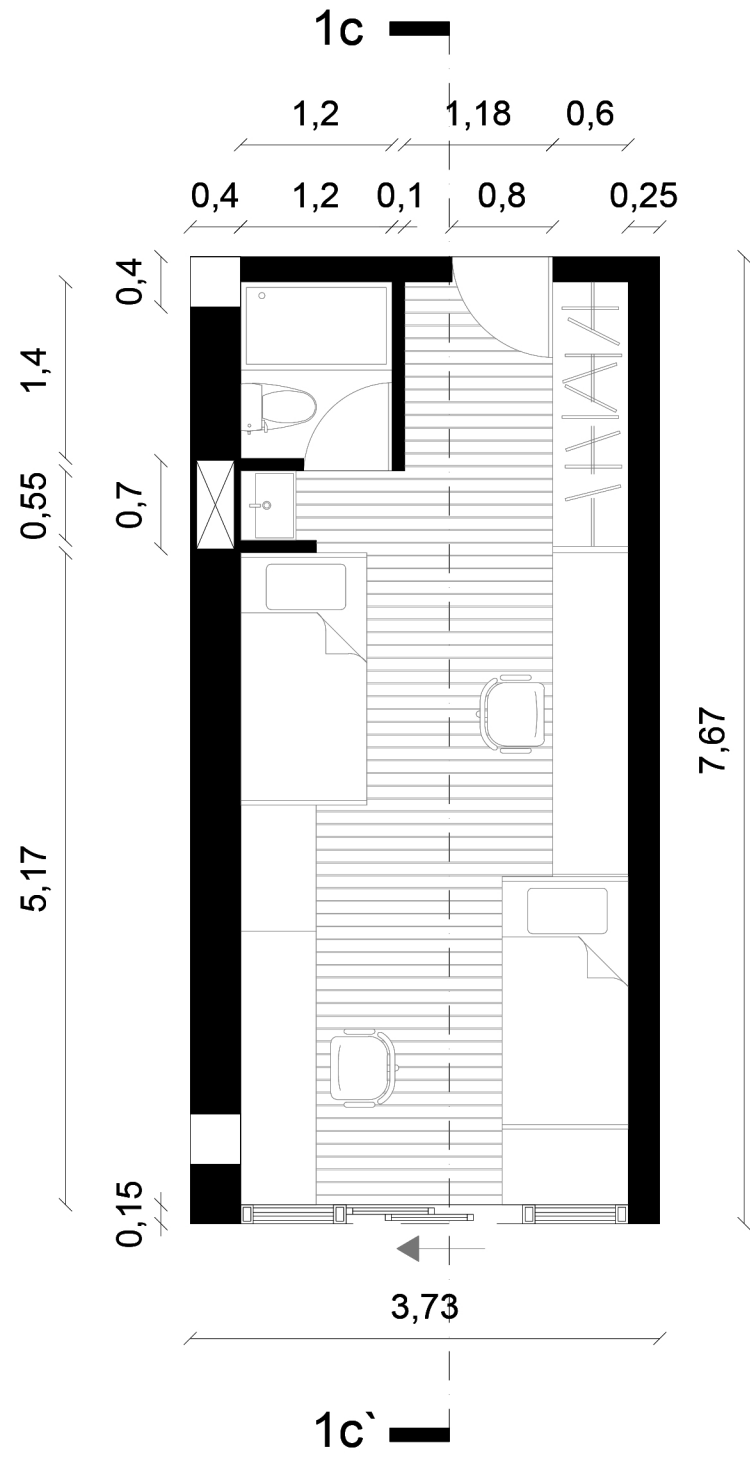
Tipología de dormitorio simple n.III

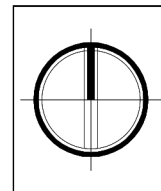
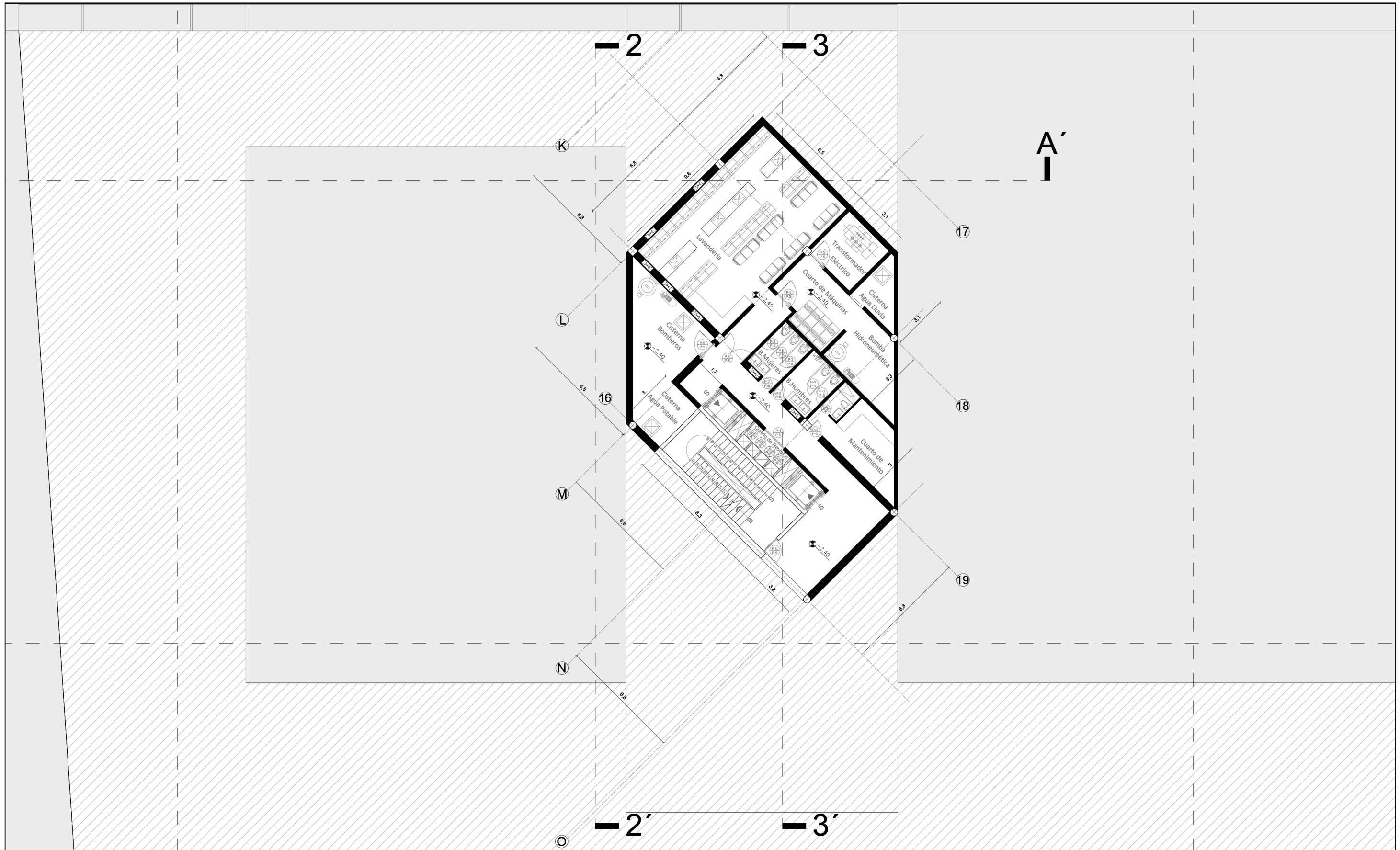


Sección 1c - 1c'



Isometría tipología de dormitorio simple n.III





TEMA:
Residencia Universitaria
en La Mariscal

AUTOR:
Christian G. Galeas
Campos

TUTOR GUIA:
Arq. Dario Cobos

TUTOR CORRECTOR:
Arq. Mauro Cepeda

CONTIENE:
Fachada Sur

NOTAS:

ESCALA:
1:150

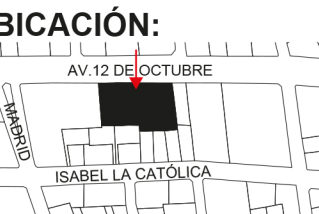
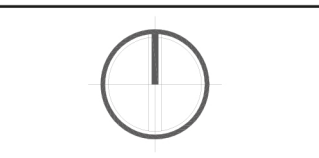


LÁMINA:
ARQ - 20

